

THE NCS™

THE NATIONAL COMMUNITY SURVEY™



Results for the City of St. Anthony Village

November 3rd, 2022

December 13th, 2022



Civic Communication & Analytics Platform

Smarter, better connected communities. A civic surveying, policy polling, and constituent communication tech platform.



Advanced Survey Science & Performance Analytics

Data insights to help communities move forward. The premiere provider of professional civic surveys and performance benchmarking analyses.

Questions about our product?

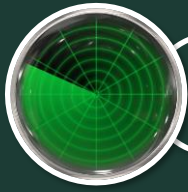
Visit www.polco.us to learn more

Exclusive partners of:

ICMA

NLC NATIONAL
LEAGUE
OF CITIES

Role of Resident Surveys in Local Governance



Monitor trends in resident opinion



Measure government performance



Inform budget, land use, strategic planning decisions



Benchmark service ratings

Facets of Community Livability



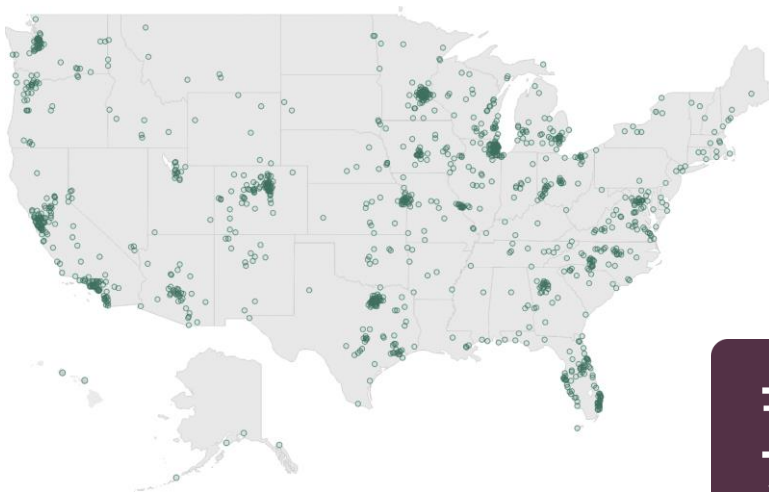
THE NCSTM
THE NATIONAL COMMUNITY SURVEYTM

The National Community Survey™ in St. Anthony Village

The NCS™ for St. Anthony Village, MN

- Survey conducted from August 1st, 2022 to September 19th, 2022
- Mailing approach employed:
 - Probability-based sample of 2,800 households
 - 582 total responses received
 - 22% overall response rate
 - Non-probability, open-participation sample: 29 responses
- Results statistically weighted to reflect St. Anthony Village overall
- 95% confidence interval with a +/- 4% margin of error

National Benchmark Comparison Database



More than **500** comparison communities across the nation.

Representing the opinions of more than **50 million** residents.

THE NCS™
THE NATIONAL COMMUNITY SURVEY™

Overview of Survey Results

Facets of Community Livability: Quality

Please rate each of the following characteristics as they relate to St. Anthony Village as a whole.
(% excellent or good)

		vs. benchmark*
Overall economic health	88%	Higher
Overall quality of the transportation system	69%	Higher
Overall design or layout of residential and commercial areas	76%	Similar
Overall quality of the utility infrastructure	85%	Higher
Overall feeling of safety	84%	Similar
Overall quality of natural environment	83%	Similar
Overall quality of parks and recreation opportunities	89%	Similar
Overall health and wellness opportunities	80%	Similar
Overall opportunities for education, culture, and the arts	71%	Similar
Residents' connection and engagement with their community	70%	Similar

Facets of Community Livability: Importance

Please rate how important, if at all, you think it is for the St. Anthony Village community to focus on each of the following in the coming two years.
(% essential or very important)

Overall economic health	86%	Similar
Overall quality of the transportation system	74%	Similar
Overall design or layout of residential and commercial areas	71%	Similar
Overall quality of the utility infrastructure	88%	Similar
Overall feeling of safety	91%	Similar
Overall quality of natural environment	83%	Similar
Overall quality of parks and recreation opportunities	85%	Similar
Overall health and wellness opportunities	68%	Similar
Overall opportunities for education, culture, and the arts	72%	Similar
Residents' connection and engagement with their community	74%	Similar

Balancing Quality and Importance



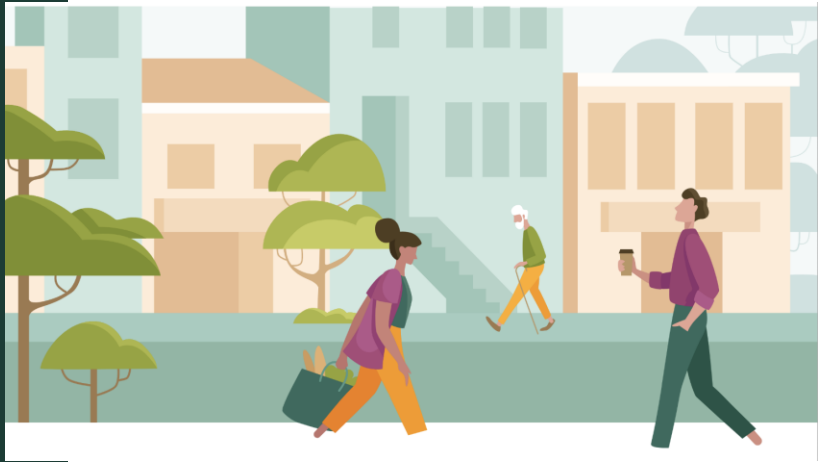
Comparisons to National Benchmarks



Survey Highlights

Key Finding #1:

St. Anthony Village's economy is a strong community feature



The Economy in St. Anthony Village



Higher than national benchmarks



88%

Overall economic health



83%

Quality of business and service establishments



73%

St. Anthony Village as a place to work



69%

St. Anthony Village as a place to visit



68%

Economic development

Percent excellent or good

Economy by Demographic

By age

18 - 34
84% Economic health
44% Cost of living

35 - 54
91% Economic health
45% Cost of living

55 - 55+
88% Economic health
34% Cost of living

Income level

**Less than
\$50,000**
91% Econ health
33% Cost of living

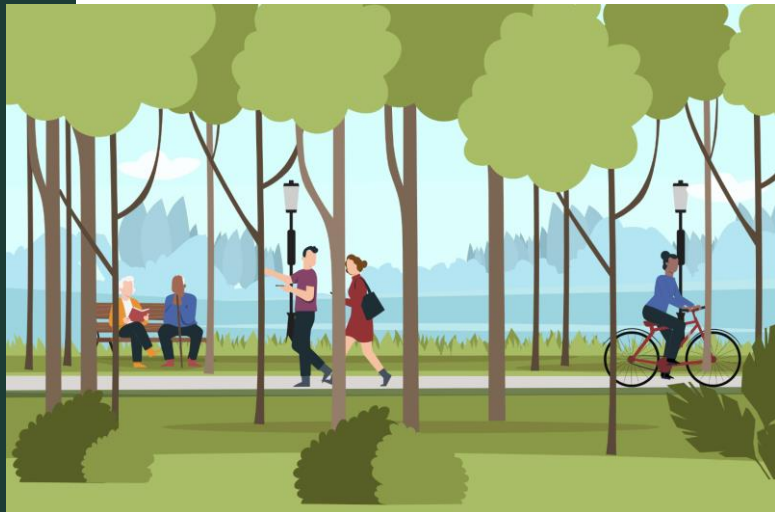
**\$50,000 -
\$74,000**
97% Econ health
38% Cost of living

**\$75,000 -
\$99,000**
92% Econ health
55% Cost of living

**More than
\$100,000**
84% Econ health
36% Cost of living

Key Finding #2:

**Residents
appreciate the St.
Anthony Village's
natural
environment and
recreational
opportunities**

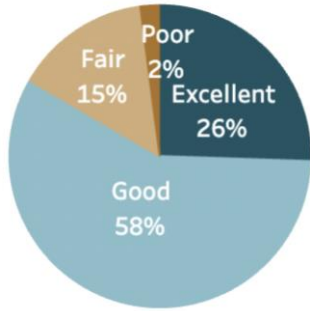


Natural Environment/Parks and Recreation in St. Anthony Village



Higher than national benchmarks

Overall quality of natural environment in St. Anthony Village



87% Cleanliness ↑

87% Yard waste pick-up ↑

84% Air Quality

82% Recycling

70% Preservation of natural areas

70% Open space

69% Water Resources

Natural Environment/Parks and Recreation in St. Anthony Village



Higher than national benchmarks



About **9 in 10** respondents positively rated:

Overall quality of parks and recreation opportunities (91%) ↑

Fitness opportunities (85%) ↑

Recreation programs/classes (86%) ↑

Recreation centers/facilities (86%) ↑

Recreation by Demographic

By age

18 - 34

74% Recreational Opportunities

69% Open space

35 - 54

58% Recreational Opportunities

70% Open space

55 - 55+

61% Recreational Opportunities

70% Open space

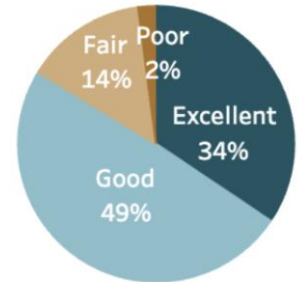
Key Finding #3:

Most residents feel a strong sense of safety in the St. Anthony Village



Safety in St. Anthony Village

Overall feeling of safety in St. Anthony Village



Please rate how safe or unsafe you feel:
(% very or somewhat safe)

In your neighborhood during the day	95%	Similar
In St. Anthony Village's downtown/commercial area during the day	95%	Similar
From fire, flood, or other natural disaster	92%	Similar
From violent crime	85%	Similar
From property crime	79%	Similar

Safety Services in St. Anthony Village



93%

Fire services



91%

Ambulance/
Emergency
medical
services



87%

Fire
prevention/
education



85%

Police
services



82%

Crime
prevention



79%

Animal
control

Percent excellent or good

Safety by Demographic

By Sex

Male identifying

85% Overall feeling of safety

84% Police/sheriff services

Female identifying

82% Overall feeling of safety

87% Police/sheriff services

Race and Hispanic Origin

White alone

84% Overall feeling of safety

90% Police/sheriff services

Not White alone

84% Overall feeling of safety

94% Police/sheriff services

Key Finding #4:

**Residents value
the City's utility
infrastructure**

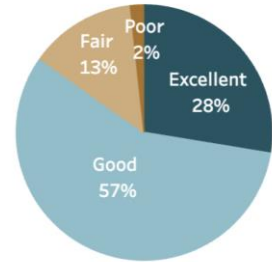


Utilities in St. Anthony Village

Please rate the quality of each of the following services in St. Anthony Village.
(% excellent or good)

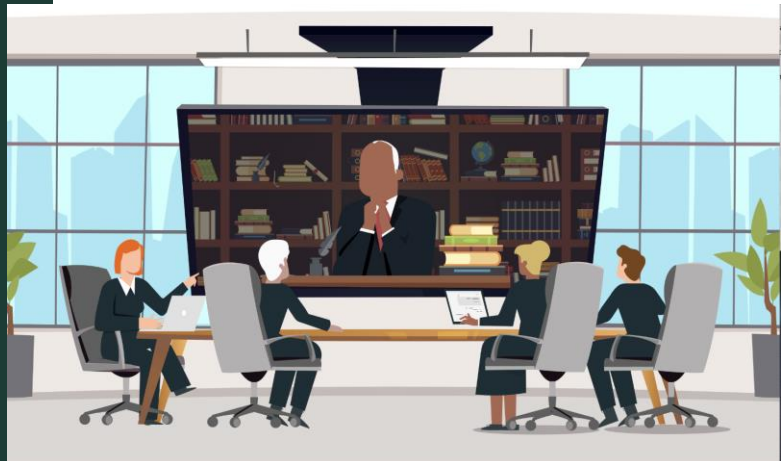
		vs. benchmark*
Sewer services	88%	Similar
Garbage collection	87%	Similar
Power (electric and/or gas) utility	87%	Similar
Storm water management	84%	Higher
Utility billing	81%	Similar
Drinking water	68%	Similar
Affordable high-speed internet access	67%	Higher

Overall quality of the utility infrastructure in St. Anthony Village



Key Finding #5:

Residents show trust in Village leadership



Governance in St. Anthony Village

Please rate the following categories of St. Anthony Village government performance.
(% excellent or good)

Treating residents with respect	81%	Higher
Being honest	78%	Higher
Treating all residents fairly	76%	Higher
Generally acting in the best interest of the community	75%	Higher
The overall direction that St. Anthony Village is taking	74%	Higher
Being open and transparent to the public	73%	Higher
Informing residents about issues facing the community	71%	Higher
Overall confidence in St. Anthony Village government	71%	Higher
The value of services for the taxes paid to St. Anthony Village	69%	Similar
The job St. Anthony Village government does at welcoming resident involvement	67%	Higher

Overall confidence in St. Anthony Village government



Government by Demographic

By housing type

Attached

86% Services provided by St. Anthony Village

70% Confidence in St. Anthony Village government

Detached

86% Services provided by St. Anthony Village

72% Confidence in St. Anthony Village government

Conclusions

1. St. Anthony Village's economy is a strong community feature
2. Residents appreciate the St. Anthony Village's natural environment and recreational opportunities
3. Most residents feel a strong sense of safety in the St. Anthony Village
4. Residents value the City's utility infrastructure
5. Residents show trust in Village leadership

Questions?

Thank you!

Joe Dell'Olio
Senior Survey Associate
Polco/National Research Center
joe@polco.us

