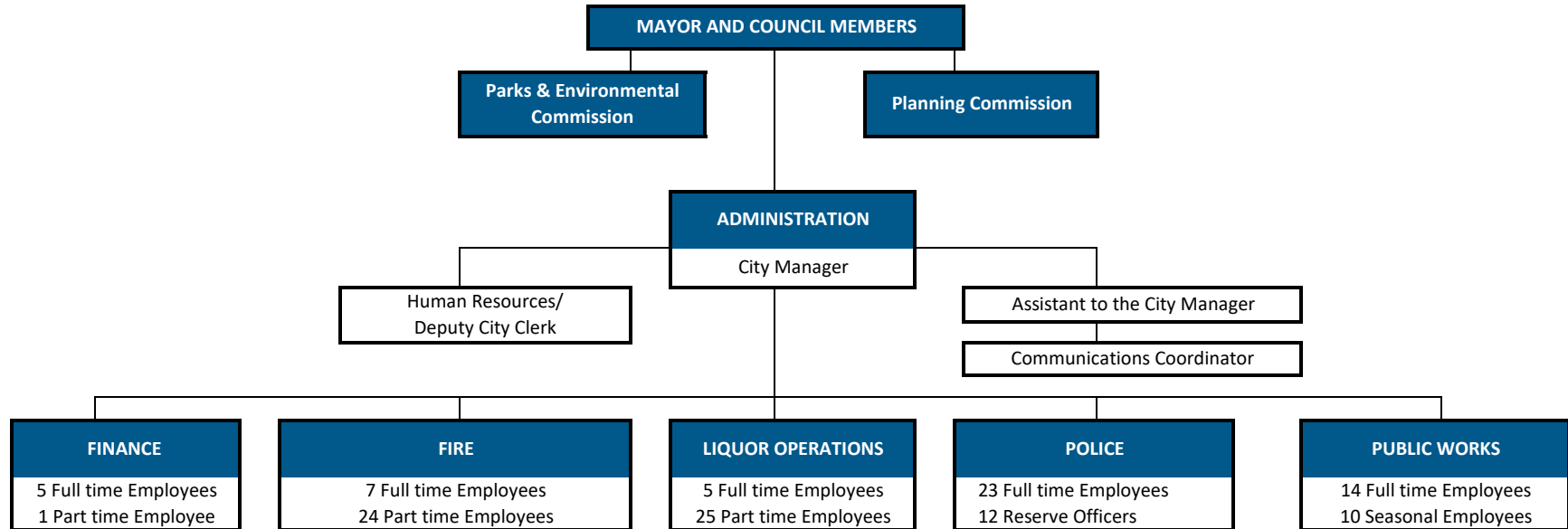




St. Anthony Organizational Chart



Consultants

Engineer - WSB & Associates
 Financial - Ehlers & Associates
 Legal - Dorsey & Whitney
 Planner - Northwest Associated Constultants, Inc.

Full-Time Positions = 58
 Part-Time Positions (average) = 49
 Public Works Seasonal=10
 Police Reserves (Unpaid) = 12